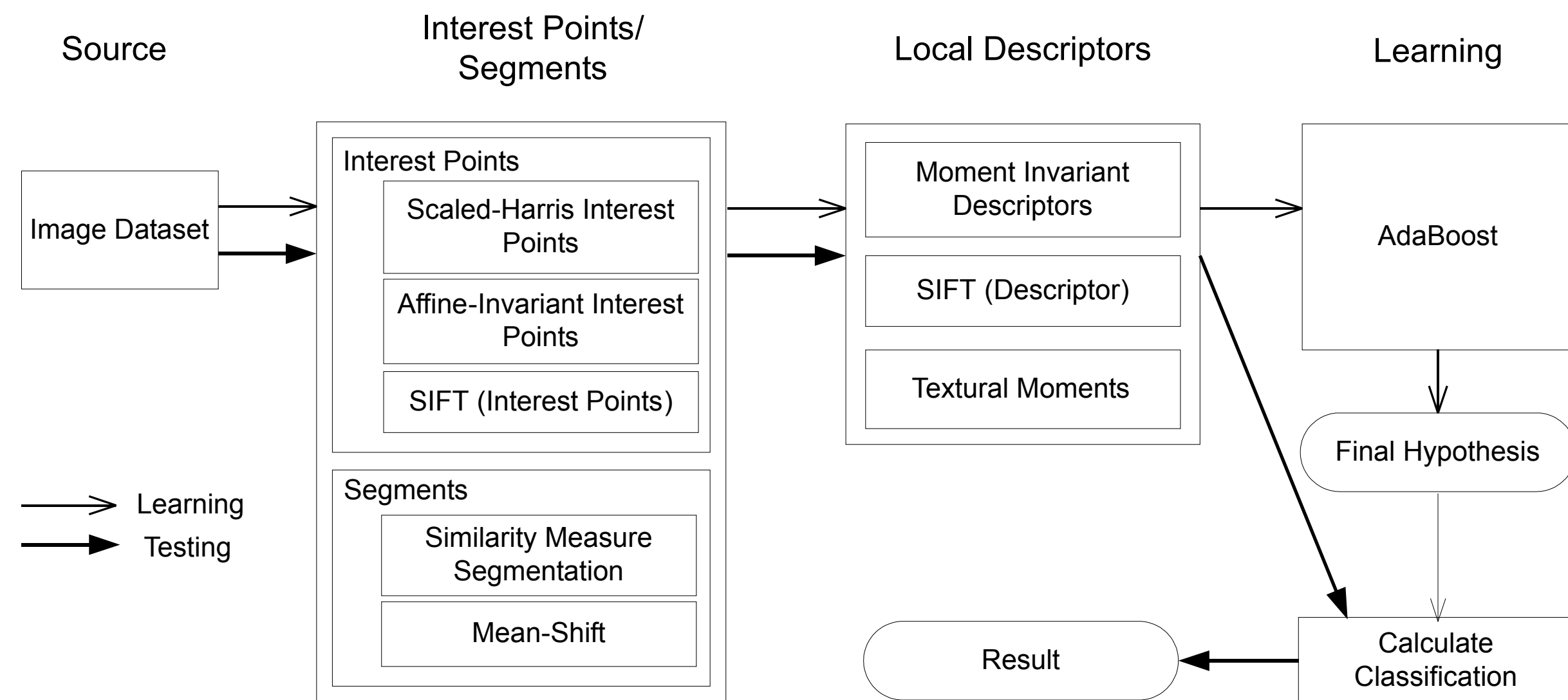


Object Recognition and Categorization



| | Segmentation | Interest Points | Others |
|------------|--------------|-----------------|--------------------------------|
| Airplanes | 91.7 (SM) | 88.9 (Mom.Inv.) | 90.2 (Fergus et al. CVPR 2003) |
| Faces | 98.2 (SM) | 93.5 (Mom.Inv.) | 96.4 (Fergus et al. CVPR 2003) |
| Cars(Rear) | 96.5 (SM) | 92.1 (Mom.Inv.) | 90.3 (Fergus et al. CVPR 2003) |
| Bikes | 85 (SM) | 86.5 (SIFT) | X |
| Persons | X | 80.8 (SIFT) | X |

Results (ROC equal error rate)

- + Boosting gets good results on difficult dataset
- + Simple similarity measure outperforms interest point

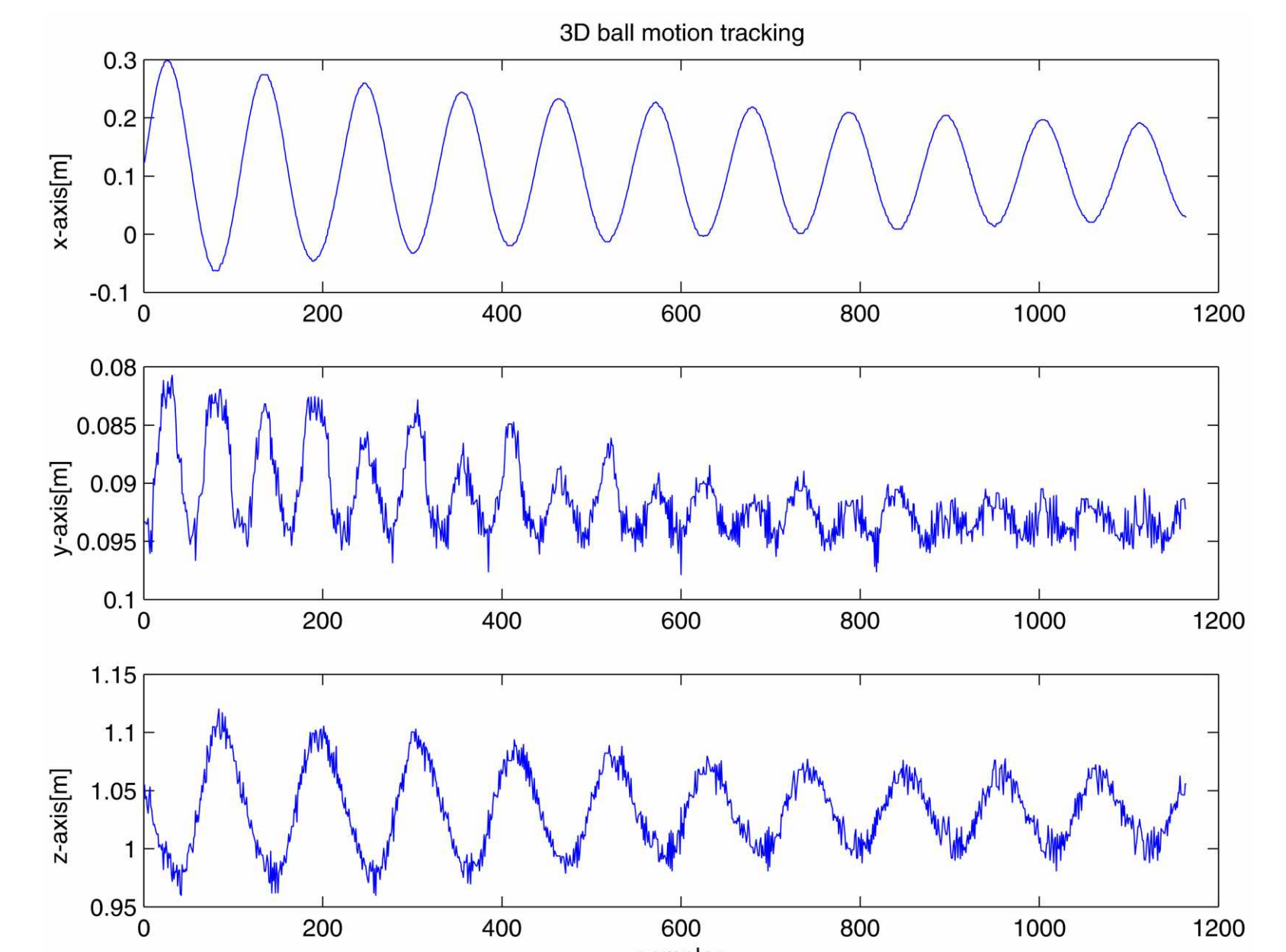
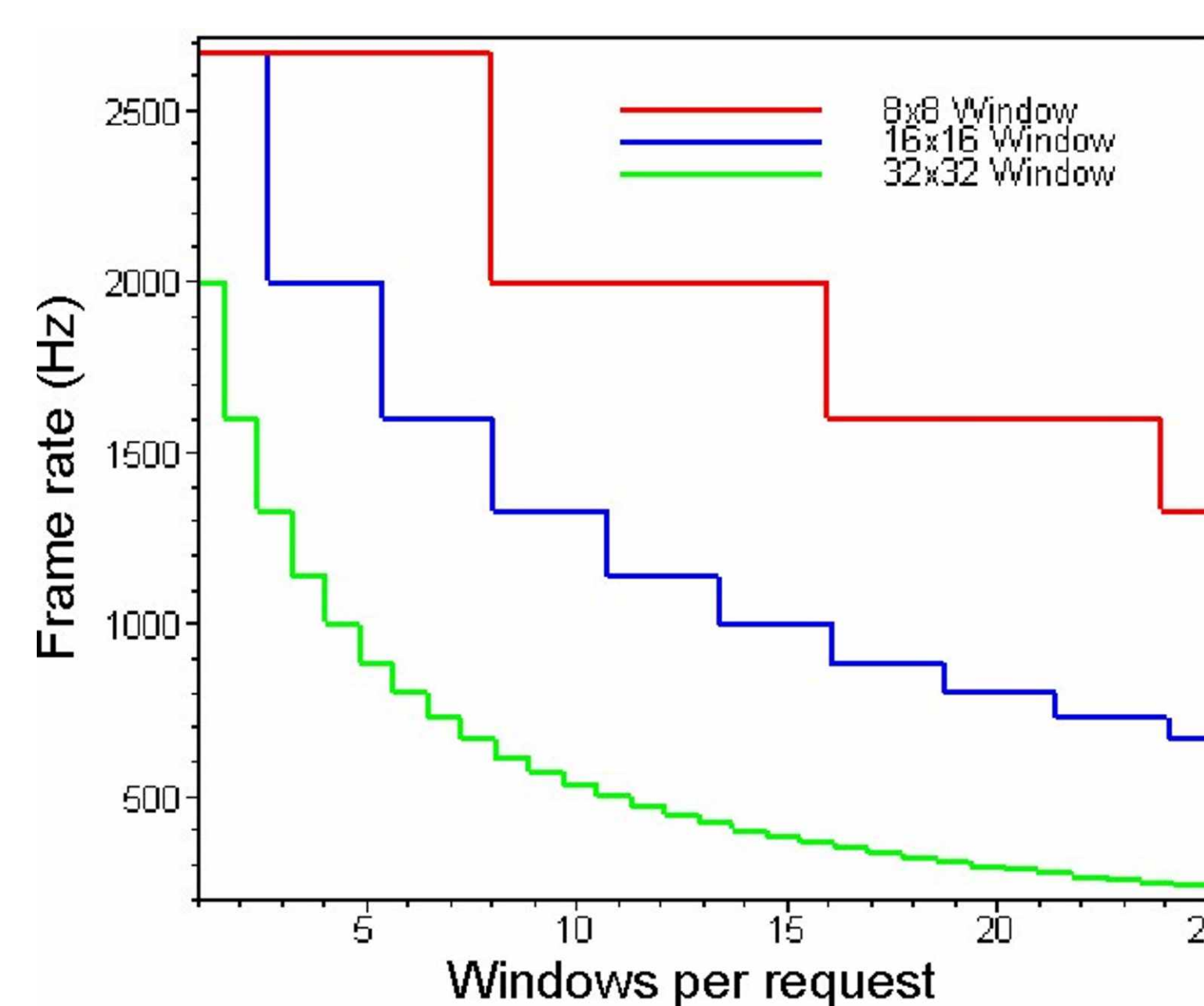
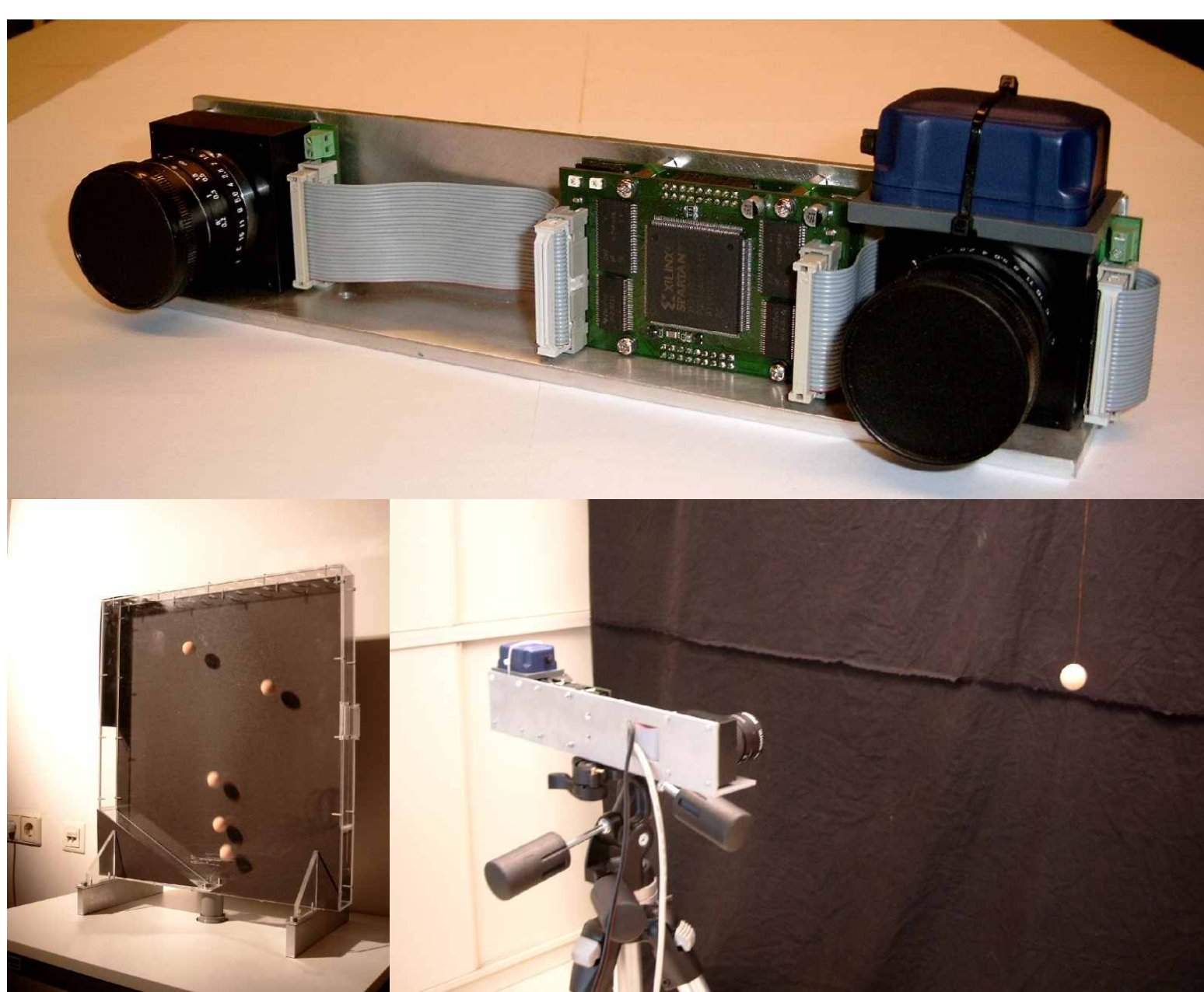


Complex image database



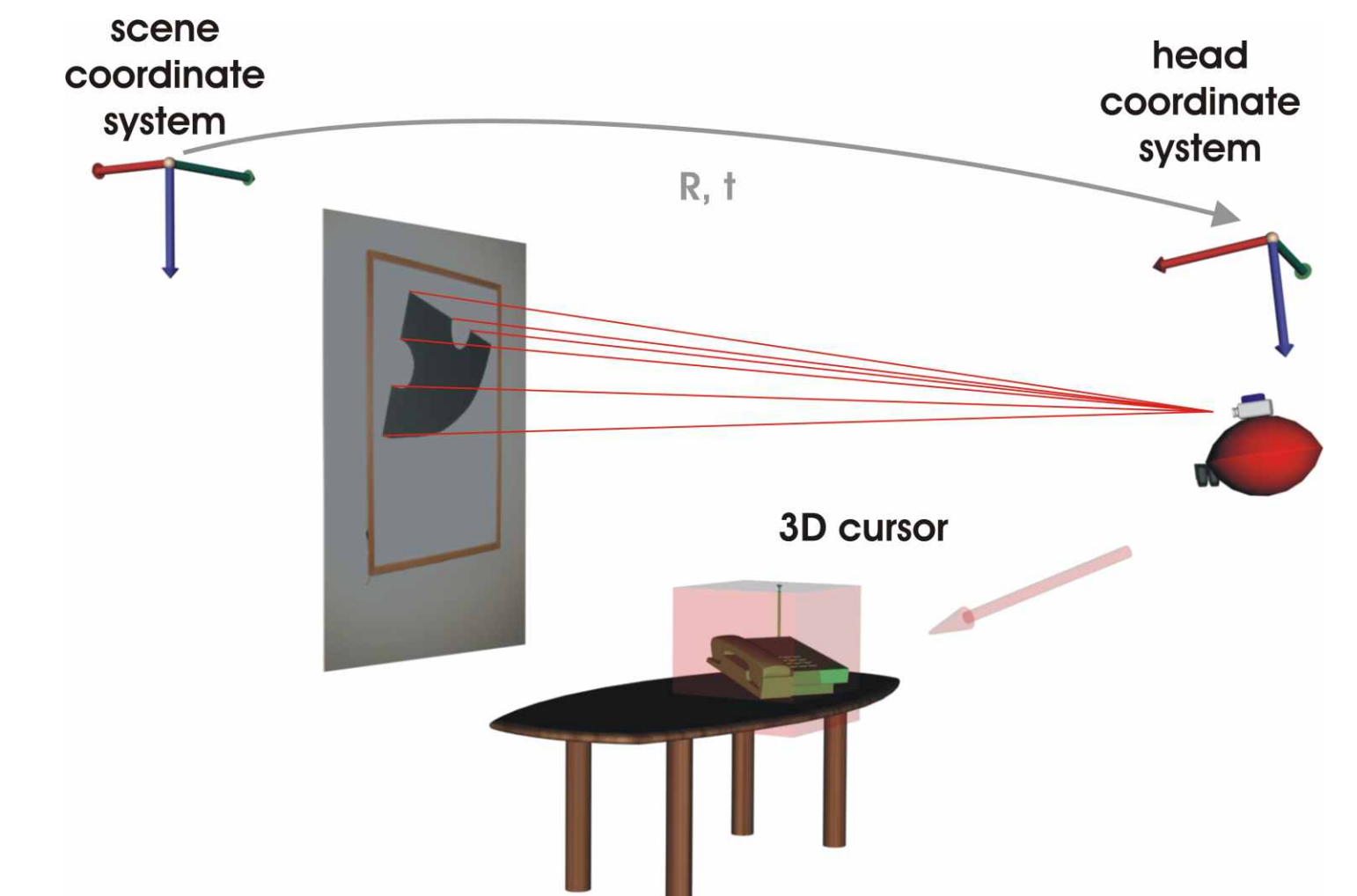
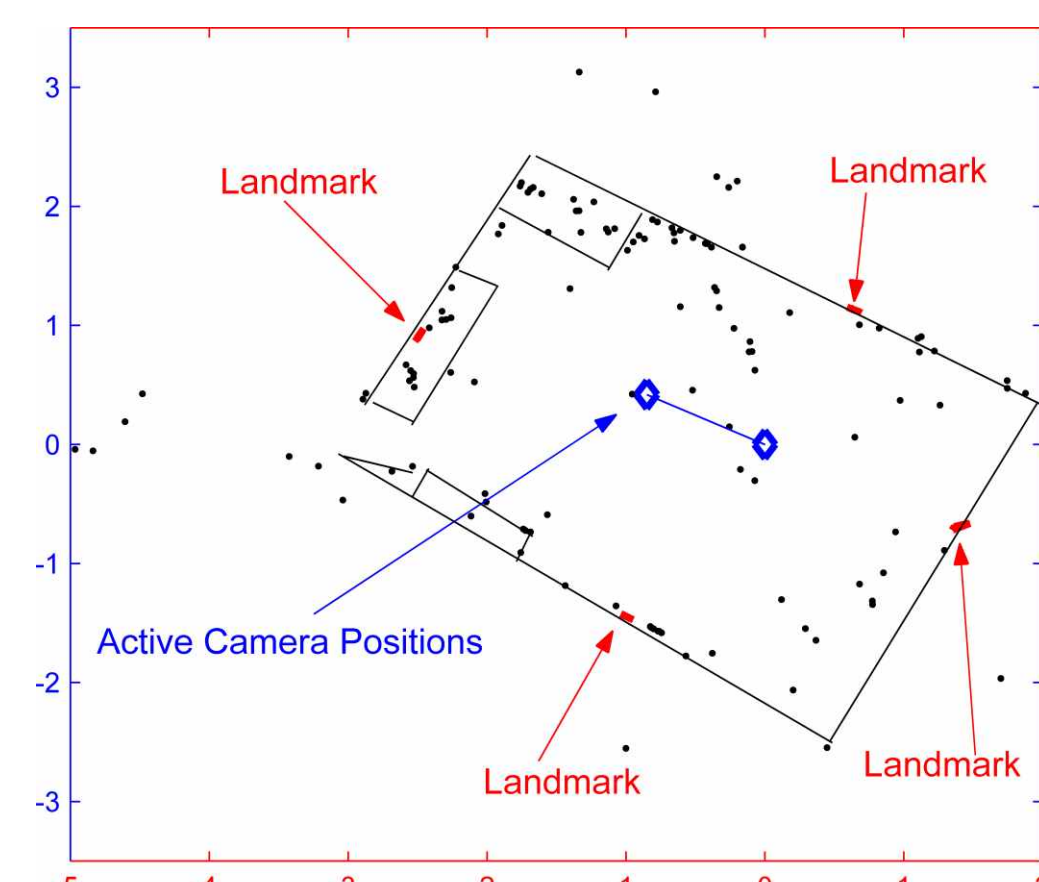
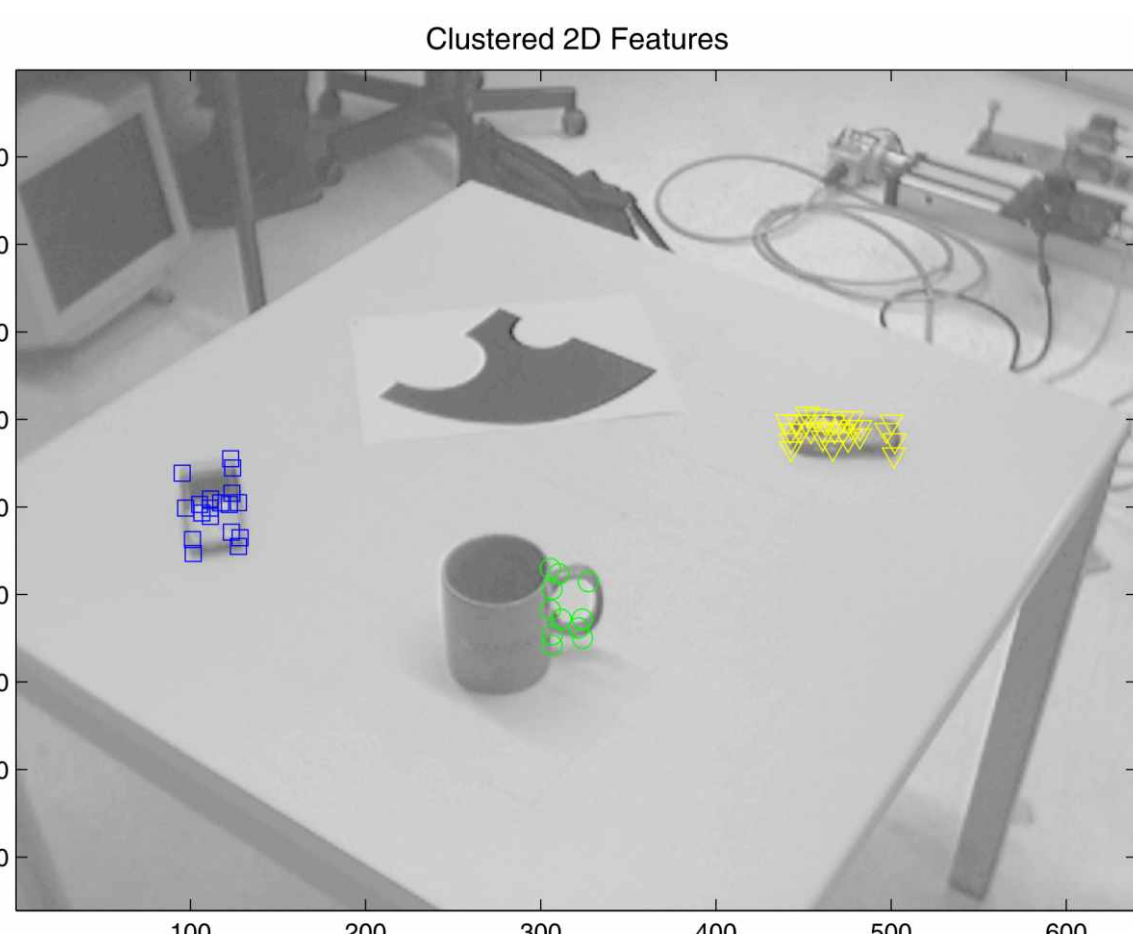
Hypotheses localization

Active Vision "On the Chip"



- + A new, versatile sensor for high-speed real-time tracking, etc.

Spatio-Temporal Analysis



- + Ongoing research, towards on-line spatio-temporal reasoning