

Jana Kostková and Radim Šára  
Center for Machine perception  
Czech Technical University, Prague, Czech Republic  
{kostkova, sara}@cmp.felk.cvut.cz, http://cmp.felk.cvut.cz

April 18, 2002

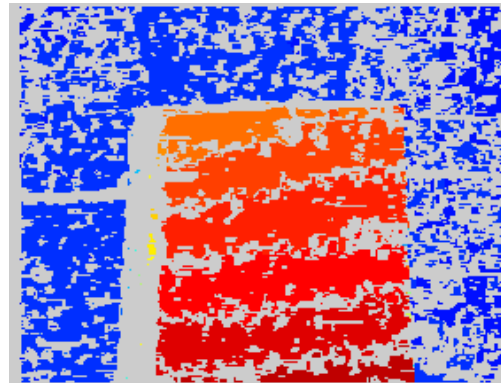
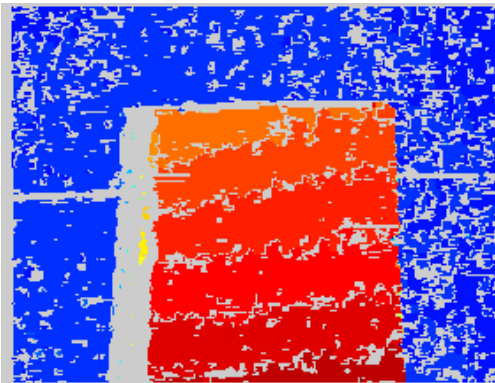
Disparity maps computed by Disparity Component Matching and Confidently Stable Matching. The fixed parameters for Disparity Component were set to: Size...25, SearchDepth...7, Neighborhood... $5 \times 5$ , OrderingDepth...2. Varying parameter: SearchRange...depicted in figures. Parameters for Confidently Stable approach,  $\alpha$  and  $\beta$ , are described in figures as well.

Map image pair: search range ... 0 – 29

Confidently Stable Matching

$\alpha = 10, \beta = 0.02$

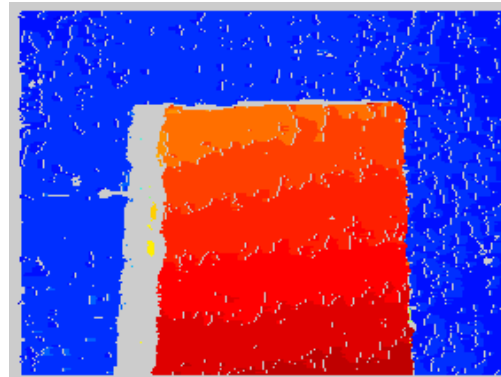
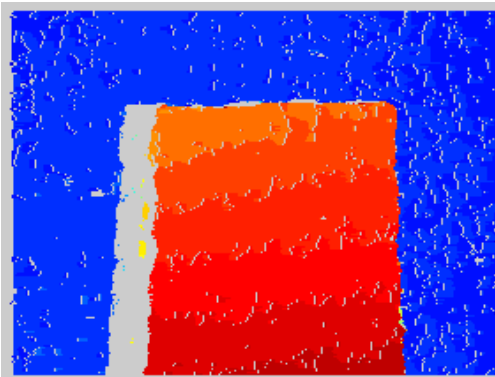
$\alpha = 20, \beta = 0.05$



Disparity Component Matching

$\alpha = 10, \beta = 0.02$

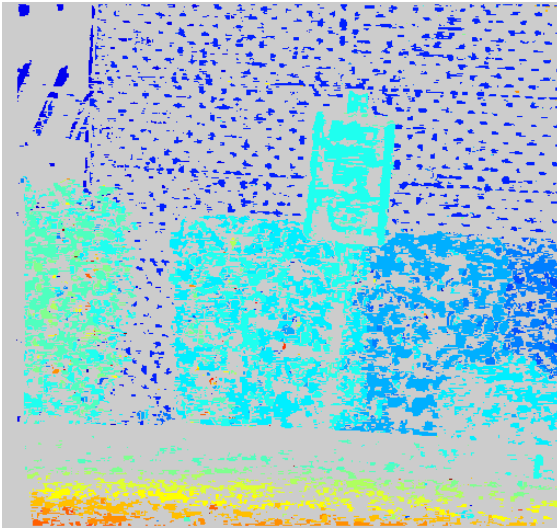
$\alpha = 20, \beta = 0.05$



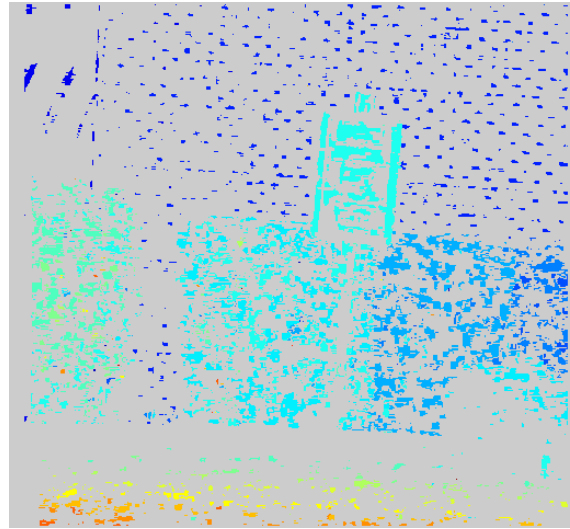
Shrub image pair: search range ... 10 – 30

Confidently Stable Matching

$\alpha = 10, \beta = 0.02$

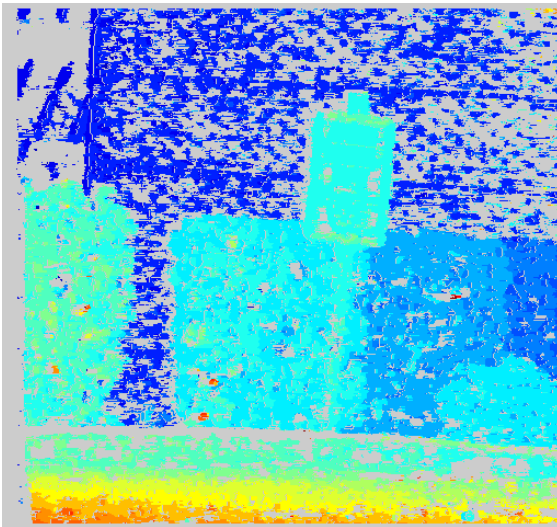


$\alpha = 20, \beta = 0.05$

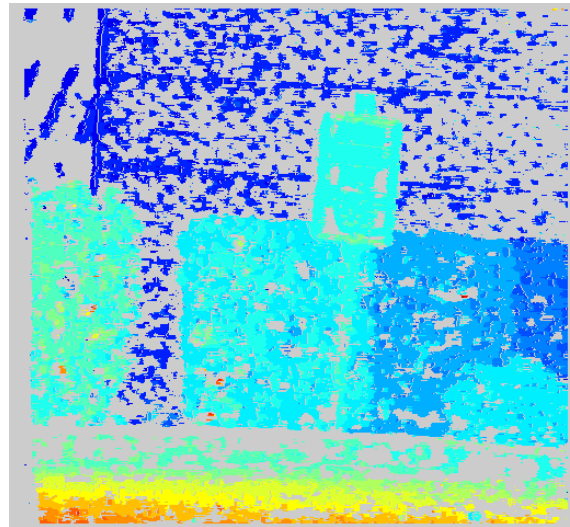


Disparity Component Matching

$\alpha = 10, \beta = 0.02$



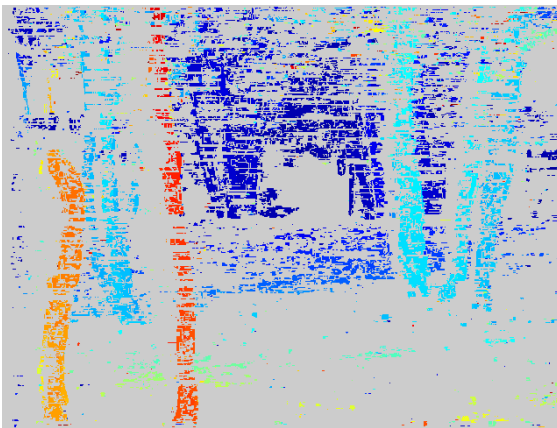
$\alpha = 20, \beta = 0.05$



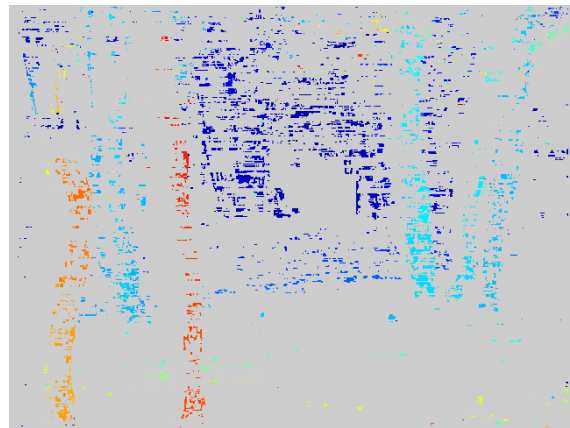
Birch image pair: search range ... 0 – 55

Confidently Stable Matching

$\alpha = 10, \beta = 0.02$

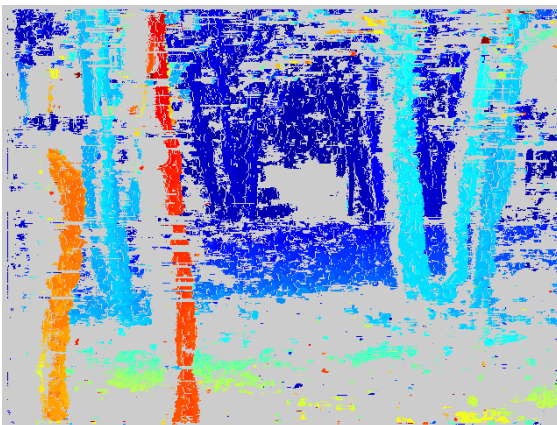


$\alpha = 20, \beta = 0.05$

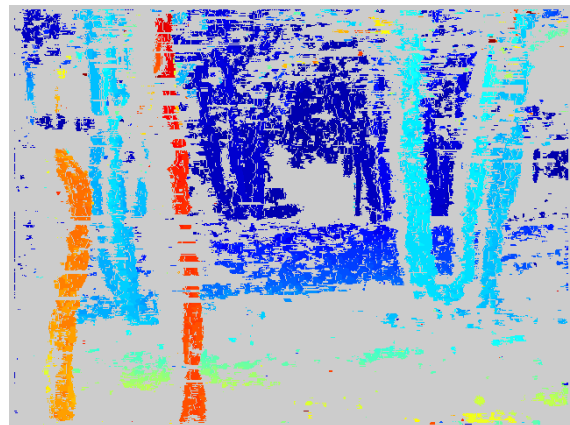


Disparity Component Matching

$\alpha = 10, \beta = 0.02$



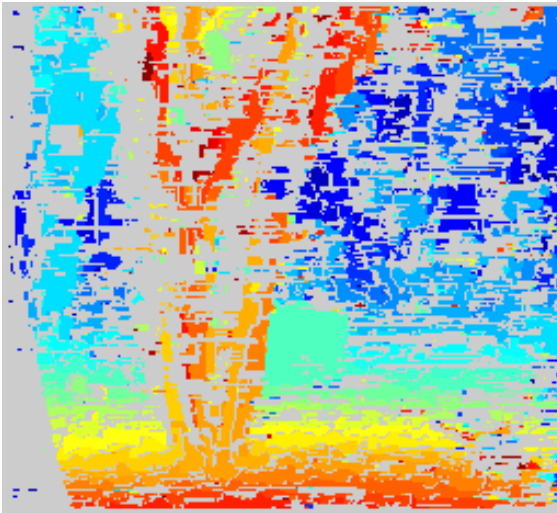
$\alpha = 20, \beta = 0.05$



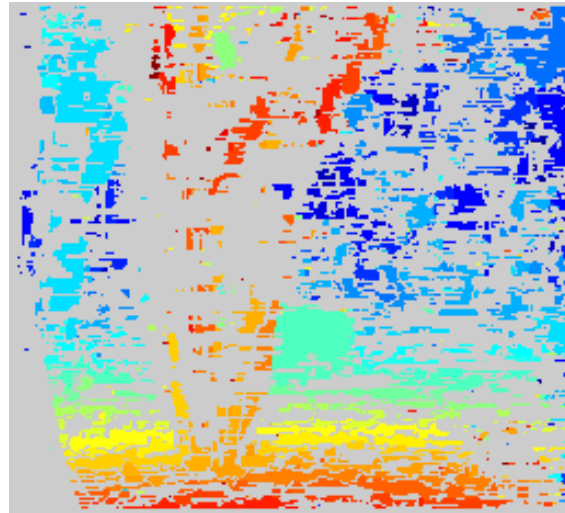
EPI image pair: search range ... 0 – 35

Confidently Stable Matching

$\alpha = 10, \beta = 0.02$

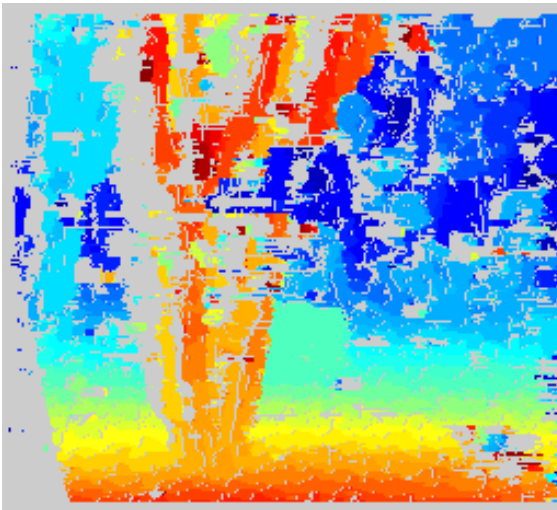


$\alpha = 20, \beta = 0.05$

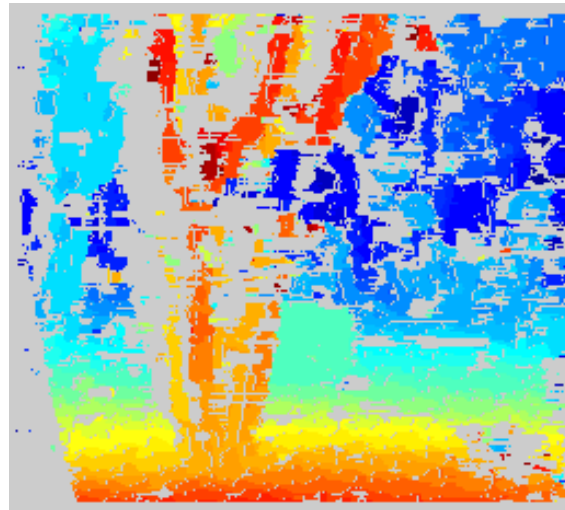


Disparity Component Matching

$\alpha = 10, \beta = 0.02$



$\alpha = 20, \beta = 0.05$

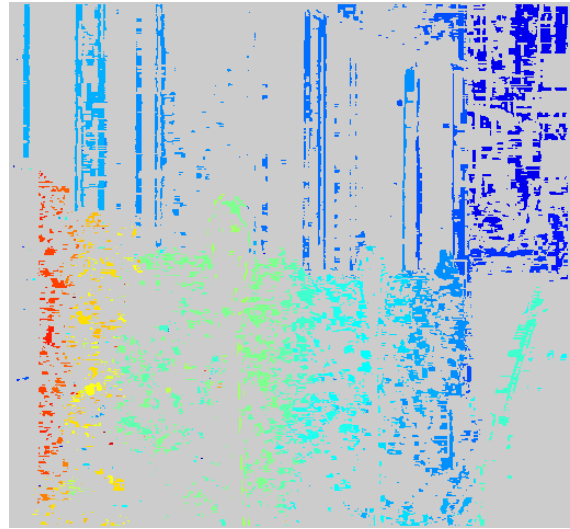
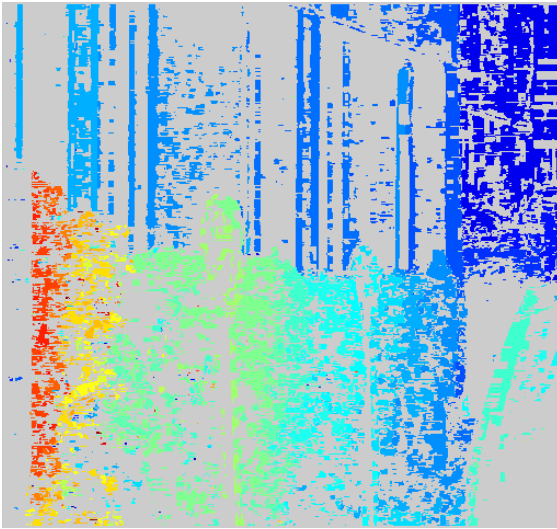


Parkin Meter image pair: search range ... 0 – 30

Confidently Stable Matching

$\alpha = 10, \beta = 0.02$

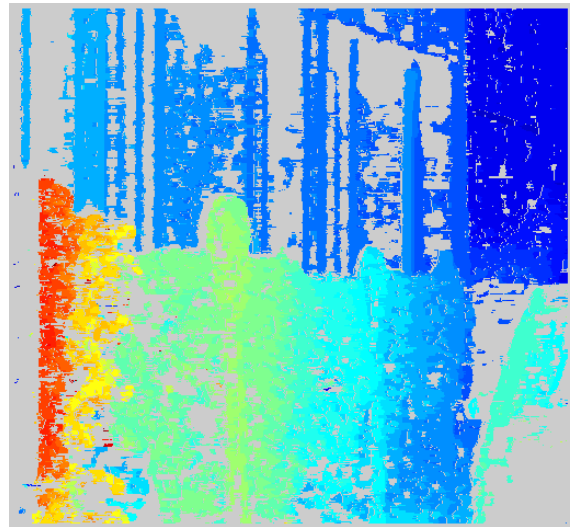
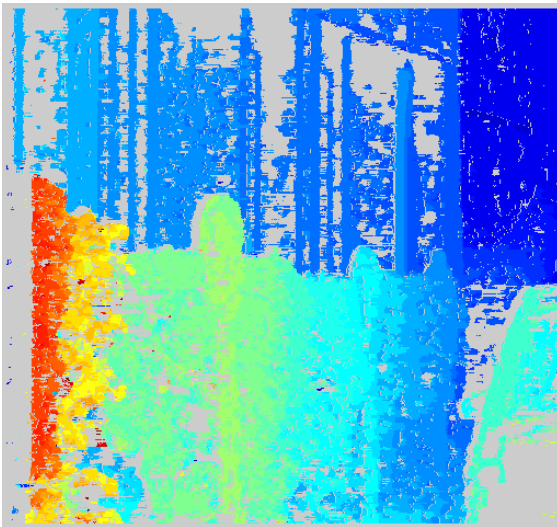
$\alpha = 20, \beta = 0.05$



Disparity Component Matching

$\alpha = 10, \beta = 0.02$

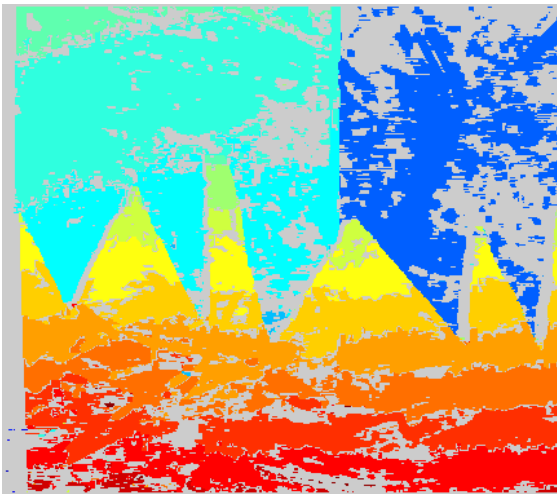
$\alpha = 20, \beta = 0.05$



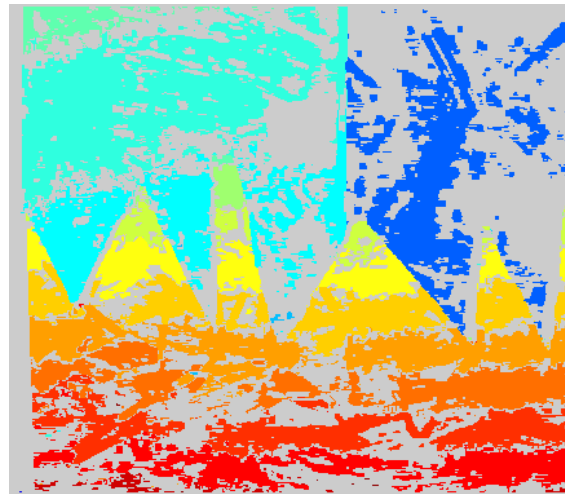
Sawtooth image pair: search range ... 0 – 19

Confidently Stable Matching

$\alpha = 10, \beta = 0.02$

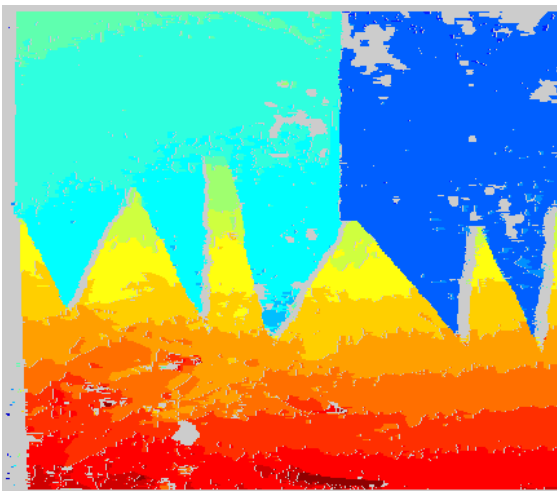


$\alpha = 20, \beta = 0.05$

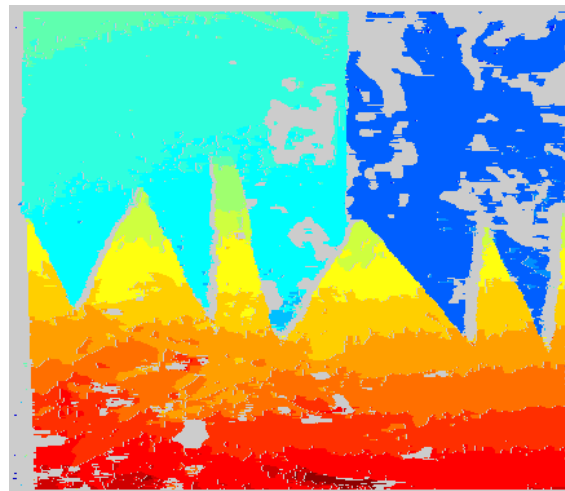


Disparity Component Matching

$\alpha = 10, \beta = 0.02$



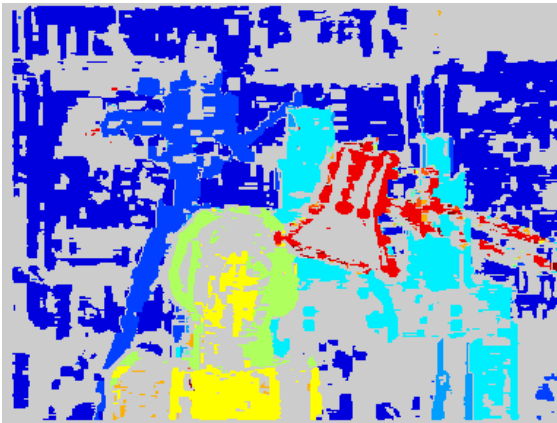
$\alpha = 20, \beta = 0.05$



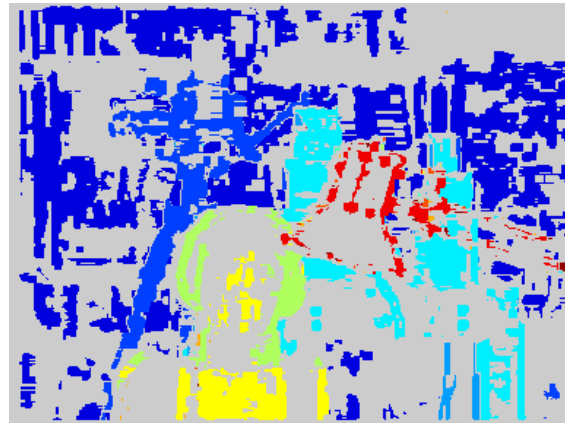
Lab Scene image pair: search range ... 4 – 15

Confidently Stable Matching

$\alpha = 10, \beta = 0.02$

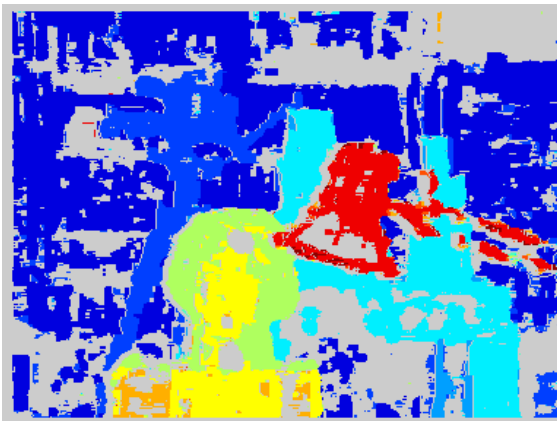


$\alpha = 20, \beta = 0.05$

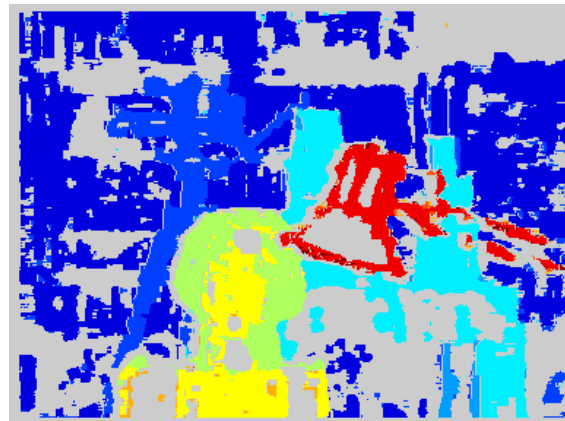


Disparity Component Matching

$\alpha = 10, \beta = 0.02$



$\alpha = 20, \beta = 0.05$

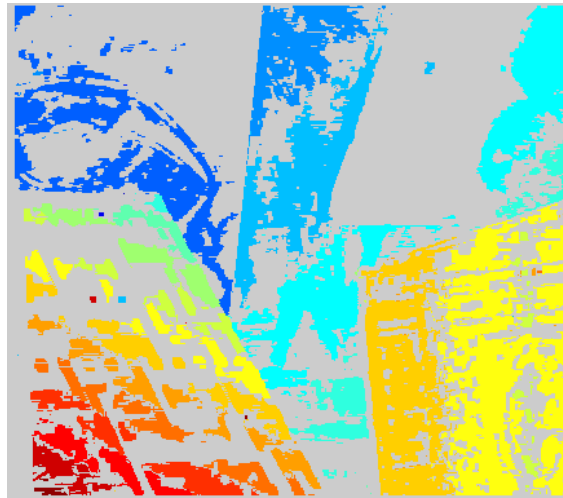
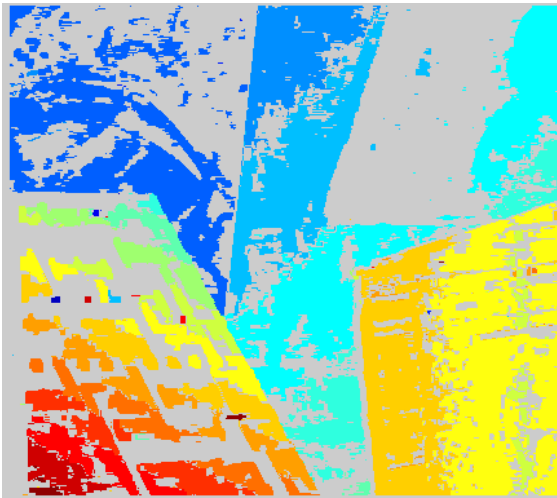


Venus image pair: search range ... 0 – 19

Confidently Stable Matching

$\alpha = 10, \beta = 0.02$

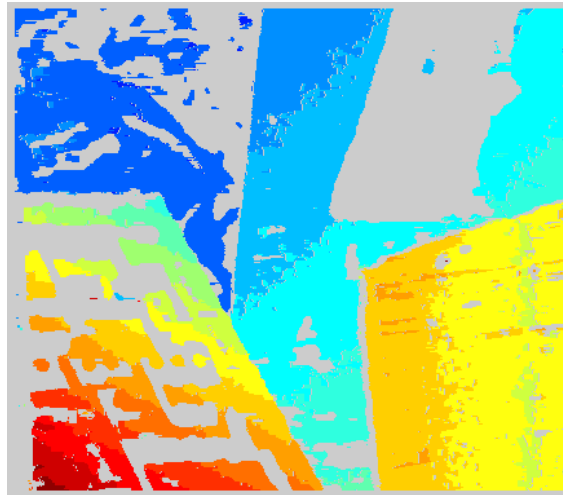
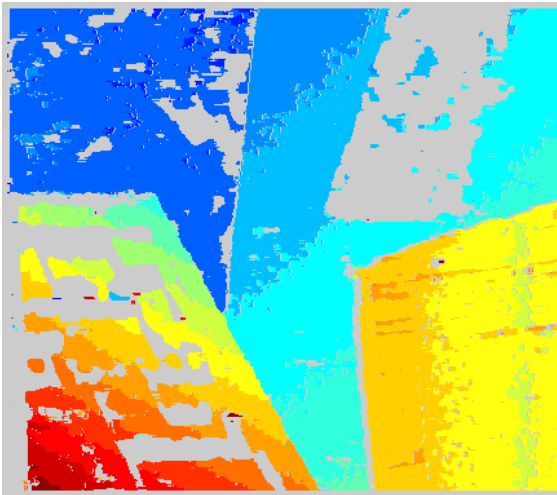
$\alpha = 20, \beta = 0.05$



Disparity Component Matching

$\alpha = 10, \beta = 0.02$

$\alpha = 20, \beta = 0.05$



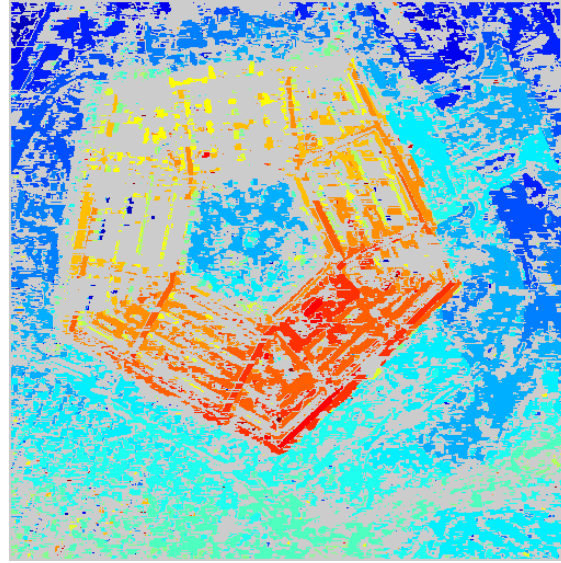
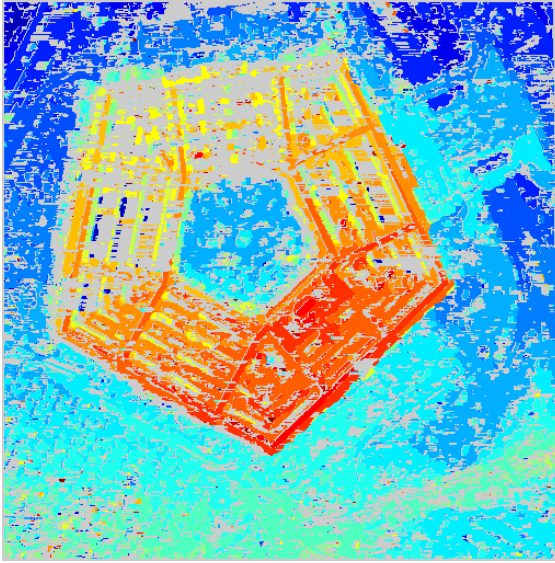


Pentagon image pair: search range ... -10 – 10

Confidently Stable Matching

$\alpha = 10, \beta = 0.02$

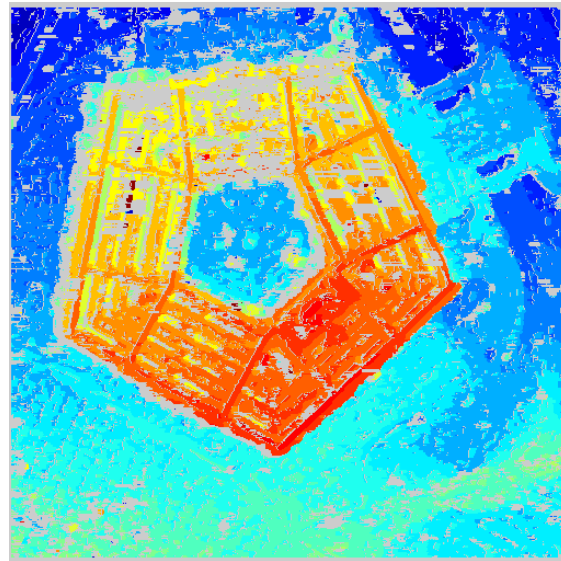
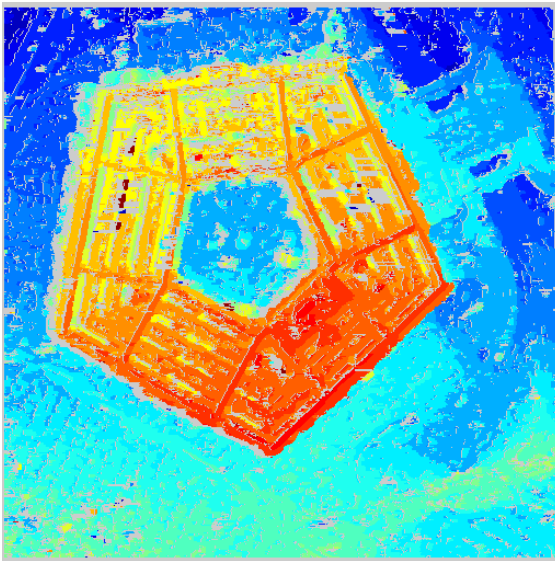
$\alpha = 20, \beta = 0.05$



Disparity Component Matching

$\alpha = 10, \beta = 0.02$

$\alpha = 20, \beta = 0.05$

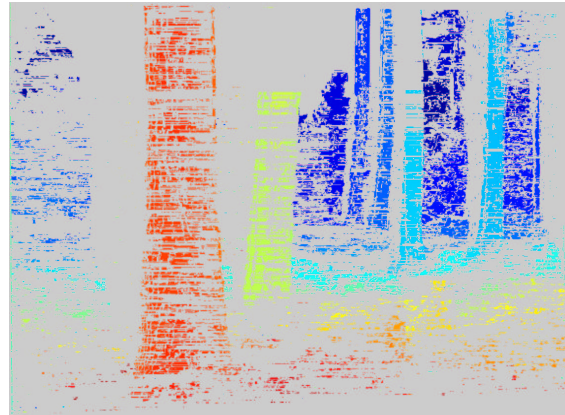
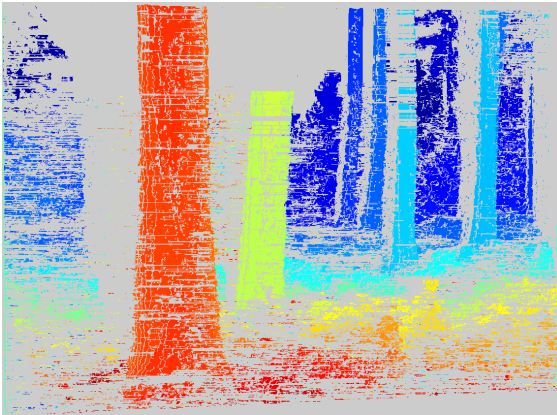


Larch image pair: search range ... -88 – 90

Confidently Stable Matching

$\alpha = 10, \beta = 0.02$

$\alpha = 20, \beta = 0.05$



Disparity Component Matching

$\alpha = 10, \beta = 0.02$

$\alpha = 20, \beta = 0.05$

